

Digital High Security System Nfc Card Smart Phone Fingerprint Password Key Glass Door Lock E-G190

Our Product Introduction

for more products please visit us on smartdoor-lock.com

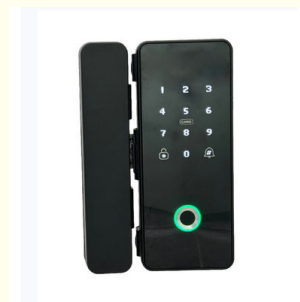
Basic Information

- Place of Origin: Guangdong, China
- Brand Name: ELA
- Model Number: E-G190
- Minimum Order Quantity: 300 sets
- Price: Negotiable
- Packaging Details: Cheap Smart Home Fingerprint Waterproof Intelligent Password Digital Sliding Door Lock
Inner Paper Packing:180mm*325mm*135mm
One piece per box
Outside Paper
Carton:680mm*380mm*385mm 8 pieces per carton.G.W:23.5KG
- Delivery Time: 10-15working day
- Payment Terms: L/C, T/T, Western Union, MoneyGram
- Supply Ability: 9999 Acre/Acres per Day

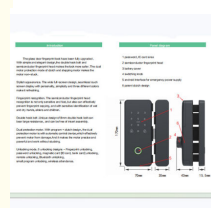
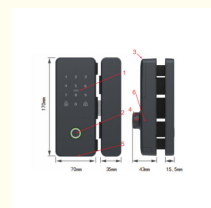


Product Specification

- Place Of Origin: Guangdong, China
- Brand Name: ELA
- Model Number: E-G190
- Operating Voltage: 4 1.5V "AA" Alkaline Batteries
- False Accept Rate: $\leq 0.0001\%$
- Frameless Door Gap: 4-15mm
- Door Opening Way: Left-Right Switch
- Appearance Material: ABS+zinc Alloy
- Static Power Consumption: Less Than 10ua
- False Reject Rate: $\leq 0.0001\%$
- Suitable Door Thickness: 8-12mm
- Product Color: Black
- Fingerprint Head: Semiconductor Biological Recognition
- Card Types: M1, 1C
- Emergency Power Supply: Android Interface



More Images



Product Description

ELA Low Price Digital High Security System nfc card smart phone fingerprint password key glass door lock E-G190

Product Description

1. Automatic Clutch Design, Automatically locked,
2. Double Lock latch,
3. With built in doorbell, Disassembly free;
4. Unlock ways: Fingerprint+App+Code+Card+remote control(optional).
5. Lock Language: English/Chinese
6. App Language: Synchronize with mobile phone system

fingerprint speed	$\leq 0.3S$
-------------------	-------------

Our Product Introduction

working voltage	four fifth 1.5V"AA"alkaline batteries
False Accept Rate	≤0.0001%
Frameless door gap	4-15mm
Door opening way	Left-Right switch
Appearance material	ABS+zinc alloy
Static Power consumption	less than 10ua
False Reject Rate	≤ 0.0001%
Suitable door thickness	8-12mm
Product color	Black
Fingerprint head	Semiconductor biological recognition
Card types	M1, 1C
Emergency power supply	Android interface
Working Temperature	-20 ~+60
Product weight	1.8kg
Applicable door	glass door, framed aluminium alloy door , wooden door, sliding door
Unlocking way	fingerprint, password, card, bluetooth applet unlocking wireless attendance

AFTER-SALE SERVICES

- 1: All items come with 1 year warranty;
- 2: During warranty period, our factory will offer free service for replacement;
- 3: Beyond warranty,we can also offer spare parts and maintenance with paid service4:

Technical support will be offered through all the after-sales service.

Our service

1. We provide 2% spare part for free;
2. We provide OEM and ODM service;
3. All items come with 2 years warranty;
4. We provide our lock ,your safety and satisfaction
5. Technical support will be offered through all the after-sales service.
6. During warranty period, our factory will offer free service for replacement;
7. Beyond warranty, we can also offer spare parts and maintenance with paid service;
8. We have sent our locks to BE/ES warehouse, which will save a lot of transport cost for our

FAQ

Q1. Is your company a factory or a trading company?
A: we are a factory mainly manufacturing smart locks.

Q2:What is your MOQ?
A: MOQ is 1 piece

Q3:Can it be customized / OEM / OEM acceptable?
A: Yes, we can help to print your logo on the lock and OEM/ODM service are welcome.

Q4:What's the delivery time?
A: Sample within 2 workdays, quantity order takes about 7~15 days.

Q5:What should do when battery is run out?
A: There has low battery alarm. You can still use the card open about 200 times when it alarms. If it is out of power, you can use backup key to open the door or use power bank to charge it to open and then change the batteries then.

Q6:How can you make a difference from other suppliers?
A: We have enjoyed more than 15 years of rapid development together with our customers.We know our customers' need as well as the market's developing trend.And we have our own professional installation team, fully understand any problems happens during the installation of the door lock,and we have the way to solve any problems that happens in the installation or use.

CLUTCH SERIES

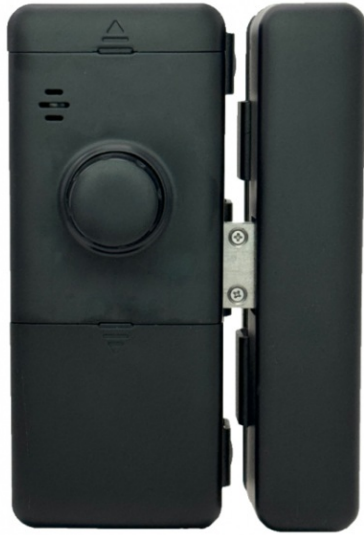
Hide Free Glass Door Lock

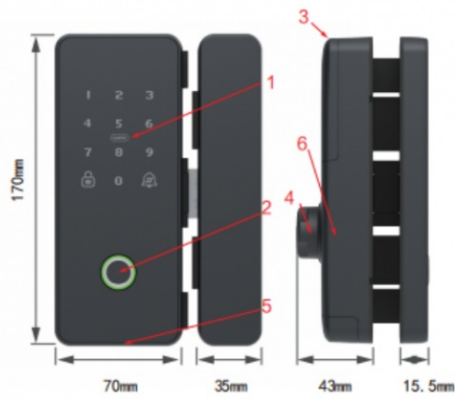


More stable with clutch!

INSTRUCTION MANUAL OF CLUTCH HOOK GLASS DOOR LOCK







Introduction

The glass door fingerprint lock have been fully upgraded. With simple and elegant design, the double hook bolt and semiconductor fingerprint head makes the lock more safer. The dual motor protection mode of clutch and stepping motor makes the motor non-stuck.

Stylish appearance. The wide full-screen design, seamless touch screen display with personality, simplicity and three different colors make it refreshing.

Fingerprint recognition. The semiconductor fingerprint head recognition is not only sensitive and fast, but also can effectively prevent fingerprint copying, and with sensitive identification of wet and dry hands, elders and children.

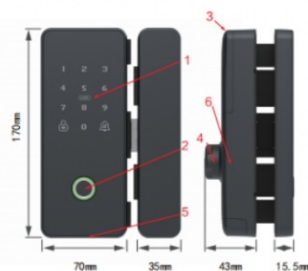
Double hook bolt. Unique design of 8mm double hook bolt can bear large resistance, and can be free of insert assembly.

Dual protection motor. With program + clutch design, the dual protection motor is with automatic control device, which effectively prevent motor from damage. And it makes the motor precise and powerful and work without stalling.

Unlocking mode. 6 unlocking designs - Fingerprint unlocking, password unlocking, magnetic card (ID card, bank card) unlocking, remote unlocking, Bluetooth unlocking, small program unlocking, wireless attendance.

Panel diagram

- 1 password, IC card area
- 2 semiconductor fingerprint head
- 3 battery cover
- 4 switching knob
- 5 Android interface for emergency power supply
- 6 patent clutch design



Technical Specification

Fingerprint speed: <0.3S
 working voltage: four fifth 1.5V "AA" alkaline batteries
 False Accept Rate: <0.0001%
 Frameless door gap: 4-15mm
 Door opening way: Left-Right switch
 Appearance material: ABS + zinc alloy
 Static Power consumption: less than 10ua
 False Reject Rate: <0.0001%
 Suitable door thickness: 8-12mm
 Product color: Black
 Fingerprint head: Semiconductor biological recognition
 Card types: M1, IC
 Emergency power supply: Android interface
 Working Temperature: -20°C~+60°C
 Product weight: 1.8kg
 Applicable door: glass door, framed aluminium alloy door, wooden door, sliding door
 Unlocking way: fingerprint, password, card, Bluetooth I Apple I unlocking wireless attendance.

Initialization instructions

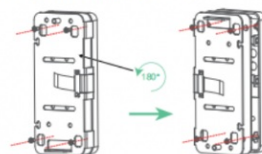


In the power-on state, press and hold the initialization button, and release it after the voice prompt "Clear successfully".

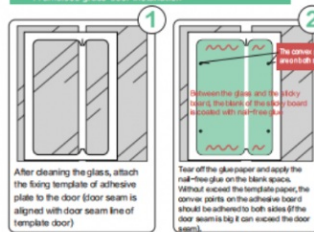
Note: In the initial state of the door lock, any fingerprint password can be unlocked. To prevent others from setting the unlocking information by mistake, please add the administrator password and fingerprint in time.

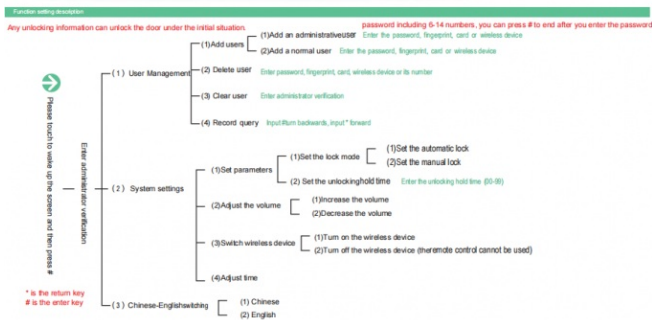
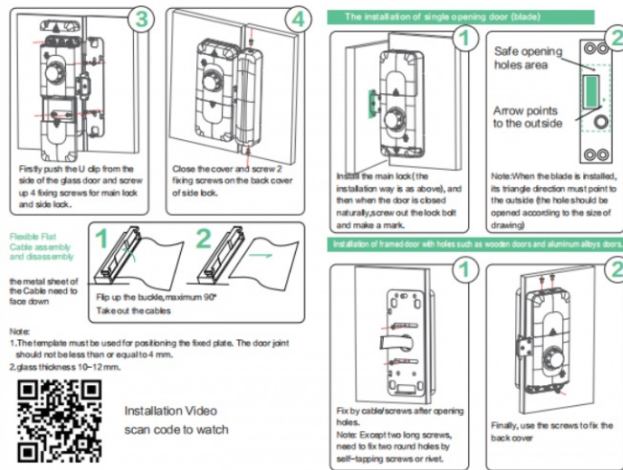
The reversing method of frameless glass door

Remove the 4 fixing screws on the front panel, rotate the U-shaped bracket by 180°, and then tighten the 4 screws.



Frameless glass door installation





ELA 茵朗 Dongguan Yinlang Electronic Technolog Co.,Ltd

13926821097 Linda@honglg.com smartdoor-lock.com

10-3 The First Industrial Park, Chong Huan West Road, Shijie town, Dongguan City, Guangdong, China