

Smart Door Lock RFID access control hotel door lock electronic lock

Our Product Introduction

for more products please visit us on smartdoor-lock.com

Basic Information

- Place of Origin: Guangdong, China
- Brand Name: ELA
- Certification: ROHS/CE/EN14846/ISO9001
- Model Number: H5013
- Minimum Order Quantity: 100 sets
- Price: Negotiable



Product Specification

- Door Type: Glass Door, Wood Door, Steel Door, Stainless Steel Door, Aluminum Door
- Data Storage Options: Cloud
- Network: Wifi, SDK
- Material: 201 Stainless Steel
- Application: Hotel, Apartments, Office, School, Government Etc
- Color: Gold, Silver
- Door Thickness: 35-90mm
- PMS: Fidelio/Opera/Others
- Unlock Way: Card+Mechanical Key
- Warranty: TWO Years
- Mortise: America Mortise
- Port: Shenzhen/guangzhou
- Highlight: electronic lock Smart Door Lock

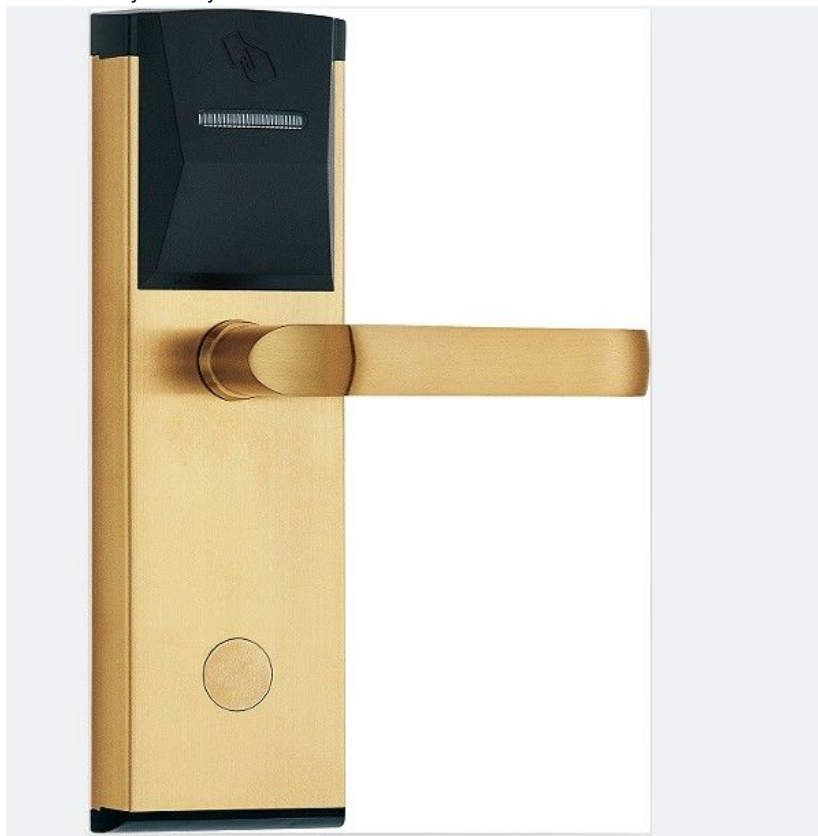
Product Description

Smart Door Lock RFID access control hotel door lock electronic lock

Product Name	Hotel Lock	
Color	Silver/gold	
Operating Voltage	DC 6V	
Limit voltage	DC 4.3V ~ 9V	
Emergency Power Supply	Micro USB power Bank	
Working power	dynamic	<150 mA
	Static	<50 uA
working environment	temperature	-20C°~ +60C°
	humidity	20%~ 80%
Storage environment	temperature	-20C°~ +80C°
	humidity	10%~ 80%

Product Description

By using RFID cards or mobile devices, guests can quickly and easily unlock their hotel room doors without the need for traditional keys or keycards.



Anti-pry alarm device

Built-in anti-pry alarm device

Violent unlocking, prying smart lock,
immediately alarm



Lock



Encoder



Mifare Card



Software



Elevator Control



DND System



Green, environmental
protection, health

security assurance

Perfect safety management
system

Level management, clear
authority



Zinc alloy handle



**201 stainless
steel panel**



**American standard
lock body**

Product packaging



Company Profile



2002

Established in initially name was Dongguan Shijie HongLG Electronic Factory

supplied for 2nd Summer Youth Olympic Games

Athlete apartment

2009



2004

manufactured the first aluminum alloy material electronic hotel lock in China

supplied for 10th national games

Athlete apartment

2011



2005

manufactured the first split model electronic hotel lock HD8018, HD8019 in China

the first face recognition lock in China

2012



2006

supplied over 2000 locks for Doha Asia Games Athlete apartment

supplied for 12th National Games

Athlete apartment

2013



2007

developed the first biometric fingerprint lock

updated to Dongguan Yinlang Electronic

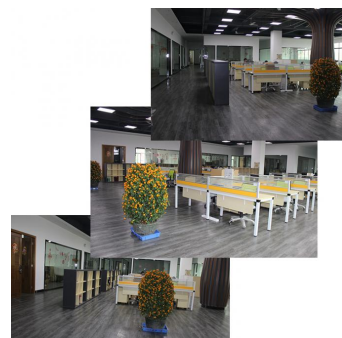
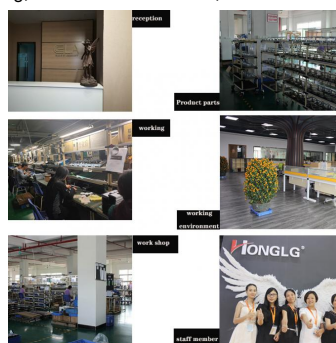
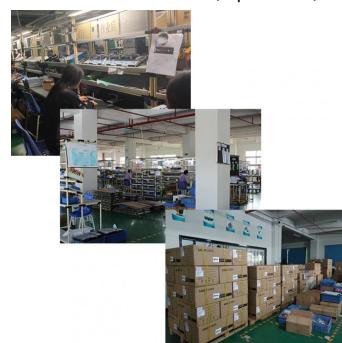
Technology Co. Ltd

2016



Ying Lang Electronic Technology Co. ,Ltd. is a professional manufacturer which Integrates of manufacture and trade.

Established in 1998, It is specialized in the development and application of electronic door lock. We offer the professional smart system solution for the clients from hotel, apartment, office building, school and residence, etc.



Our services



OEM services

1. Logo on Device
2. Welcome Screen
3. Pre-installed APP
4. Android Settings
5. Packing Box

ODM services

1. PCAB Design & Development
2. Tooling Design & Development
3. Software Customization.

1. We provide 2% spare part for free;
2. We provide OEM and ODM service;
3. All items come with 2 years warranty;
4. We provide our lock, your safety and satisfaction
5. Technical support will be offered through all the after-sales service.
6. During warranty period, our factory will offer free service for replacement;
7. Beyond warranty, we can also offer spare parts and maintenance with paid service;
8. We have sent our locks to BE/ES warehouse, which will save a lot of transport cost for our business.

Certifications



Brand Honors

Honor witnesses strength, strength witnesses glory Inland has always focused on product research and development and innovation.

For independent intellectual property rights, and has obtained a number of national patents. The process of Yinlang's pursuit of product stability and excellent quality has obtained The recognition of professional institutions and consumers.

10-3 The First Industrial Park, Chong Huan West Road, Shijie town, Dongguan City, Guangdong, China