

## Smart Hotel Electronic Door Lock Fingerprint With Advanced Technology

### Our Product Introduction

for more products please visit us on [smartdoor-lock.com](http://smartdoor-lock.com)

#### Basic Information

- Place of Origin: Guangdong, China
- Brand Name: ELA
- Certification: ROHS/CE/EN14846/ISO9001
- Model Number: H5015
- Minimum Order Quantity: 100 sets
- Price: Negotiable
- Packaging Details: Inner Paper Packing:180mm\*325mm\*135mm  
One piece per box  
Outside Paper  
Carton:680mm\*380mm\*385mm 8 pieces per carton.G.W:23.5KG  
H5015 stainless steel electronic card key  
RFID access control hotel door lock



#### Product Specification

- Door Type: Glass Door, Wood Door, Steel Door, Stainless Steel Door, Aluminum Door
- Data Storage Options: Cloud
- Network: Wifi, SDK
- Material: 201 Stainless Steel
- Application: Hotel, Apartments, Office, School, Government Etc
- Color: Gold, Silver, Black
- Door Thickness: 35-90mm
- Unlock Way: Card+Mechanical Key
- Warranty: 2 Years
- Mortise: America Mortise
- Port: Shenzhen/guangzhou
- Highlight: **Hotel Electronic Door Lock Fingerprint, Smart Hotel Door Lock Fingerprint**



#### More Images



## Product Description

# RFID Hotel Lock electric door lock fingerprint with advanced technology

Product Name	Hotel Lock	
Color	Silver/Black	
Operating Voltage	DC 6V	
Limit voltage	DC 4.3V ~ 9V	
Emergency Power Supply	Micro USB power Bank	
Working power	dynamic	<150 mA
	Static	<50 uA
working environment	temperature	-20C°~ +60C°
	humidity	20%~ 80%
Storage environment	temperature	-20C°~ +80C°
	humidity	10%~ 80%

## Product Description

Smart Hotel Lock is a cutting-edge door lock system that has been designed with high durability and reliability in mind. This innovative system is built to withstand the rigors of frequent use, ensuring that it can handle the demands of a busy hotel environment without compromising on performance.



M1 T5557卡开启



可实现蓝牙开启  
无线蓝牙系统



机械钥匙开启



学校公寓 酒店公寓一卡通



民宿公寓一卡通

公司荣誉



CE



Lock



Encoder



Mifare Card



Software



Elevator Control



DND System



Green, environmental protection, health

security assurance

Perfect safety management system

Level management, clear authority



**Zinc alloy handle**



**201 stainless  
steel panel**



**American standard  
lock body**

Product packaging

---



## Company Profile





2002

Established in initially name was Dongguan Shijie HongLG Electronic Factory

supplied for 2nd Summer Youth Olympic Games

Athlete apartment

2009



2004

manufactured the first aluminum alloy material electronic hotel lock in China

supplied for 10th national games

Athlete apartment

2011



2005

manufactured the first split model electronic hotel lock HD8018, HD8019 in China

the first face recognition lock in China

2012



2006

supplied over 2000 locks for Doha Asia Games Athlete apartment

supplied for 12th National Games

Athlete apartment

2013



2007

developed the first biometric fingerprint lock

updated to Dongguan Yinlang Electronic

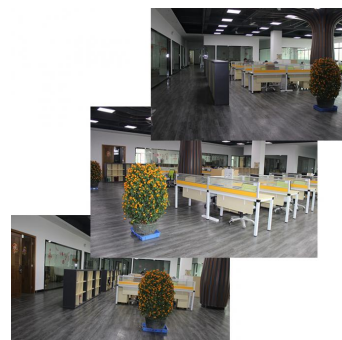
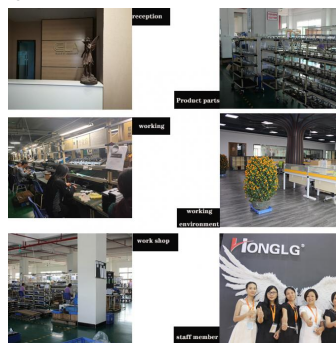
Technology Co. Ltd

2016



Ying Lang Electronic Technology Co. ,Ltd. is a professional manufacturer which Integrates of manufacture and trade.

Established in 1998, It is specialized in the development and application of electronic door lock. We offer the professional smart system solution for the clients from hotel, apartment, office building, school and residence, etc.



Our services



## OEM services

1. Logo on Device
2. Welcome Screen
3. Pre-installed APP
4. Android Settings
5. Packing Box

## ODM services

1. PCAB Design & Development
2. Tooling Design & Development
3. Software Customization.

1. We provide 2% spare part for free;
2. We provide OEM and ODM service;
3. All items come with 2 years warranty;
4. We provide our lock, your safety and satisfaction
5. Technical support will be offered through all the after-sales service.
6. During warranty period, our factory will offer free service for replacement;
7. Beyond warranty, we can also offer spare parts and maintenance with paid service;
8. We have sent our locks to BE/ES warehouse, which will save a lot of transport cost for our business.

## Certifications



### Brand Honors

Honor witnesses strength, strength witnesses glory Inland has always focused on product research and development and innovation.

For independent intellectual property rights, and has obtained a number of national patents. The process of Yinlang's pursuit of product stability and excellent quality has obtained The recognition of professional institutions and consumers.



10-3 The First Industrial Park, Chong Huan West Road, Shijie town, Dongguan City, Guangdong, China