

DND Switch Glass Panel Door Bell Hotel Door Lock Accessories

Our Product Introduction

for more products please visit us on smartdoor-lock.com

Basic Information

- Place of Origin: Dongguan, China
- Brand Name: ELA
- Model Number: SH-MLD
- Price: Negotiable
- Packaging Details:
 1. Quality Export Packing
 2. Gross Weight: 0.75kgs/pc; 30kgs/carton
 3. Packing: 1pc/inner box; 40pcs/carton; 0.06cbm/carton

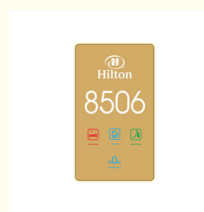
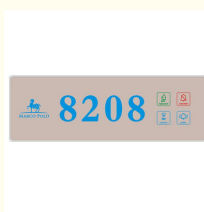
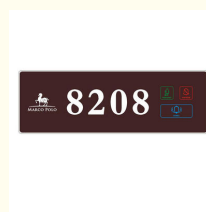


Product Specification

- Max. Voltage: AC220V/110V
- Mechanical Life: 10 Years
- Material: ABS
- Certificate: CE/ISO9001
- Color: Brown/Black
- Screen: LCD Touch
- Max. Current: 16A
- Thickness: 7mm
- Product Name: Smart Wifi Switch
- Function: Touch Panel Light Wall Switch
- Application: General-Purpose
- Type: Touch Wall Light Switch
- Feature: Easy Installation
- Highlight: DND Switch Glass Panel, ISO9001 Door Lock Accessories, Hotel Room Lock Accessories



More Images



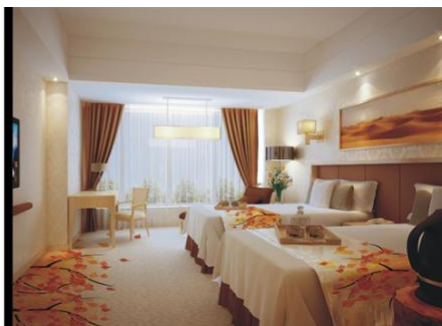
Product Description

DND function touch switch glass panel door bell hotel Door Lock Accessories

1.Material	ABS + Zinc Alloy
2.Screen	LCD Screen
3.Touch Screen	Capacitance Touch Screen
4.Color	Brown
5.Size	86*172mm

Our Product Introduction

6.Thickness	7mm
7.Installation Environment	86 bottom box
8.Working Voltage	DC5/12V, AC110/220V
9.Working Environment	Temperature: -10°C~60°C Humidity: 0%~95%
10.Service Life	10 years



01 Durable

- ABS + Zinc Alloy
- Prevent Scratches, Discoloration, Deformation
- Service life over 10 years
- Relay electric shock over 100,000 times

02 Fashionable

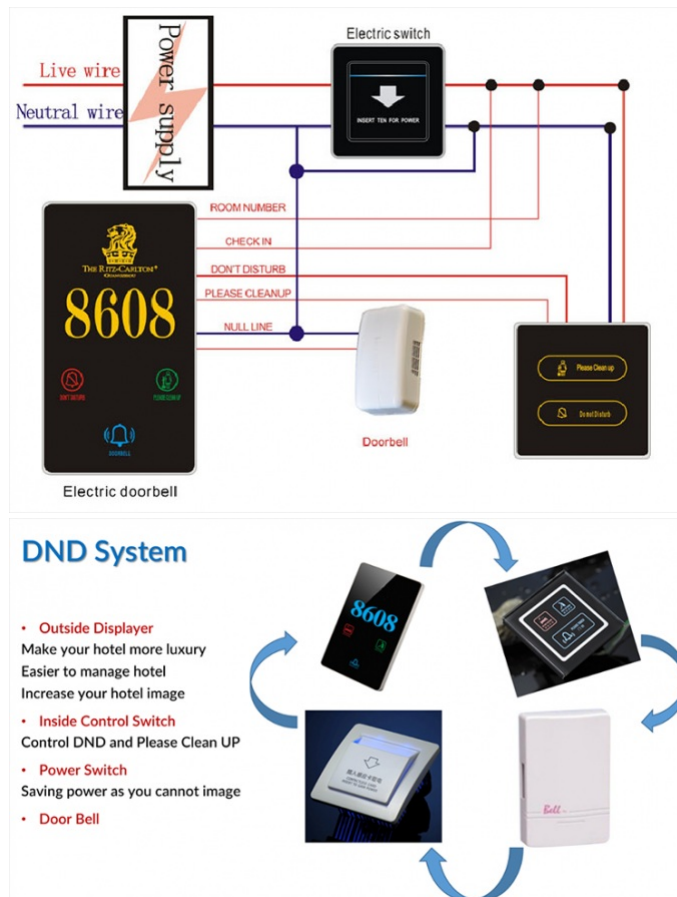
- LCD touch screen
- Capacitance touch door bell
- 9mm thickness



02 Fashionable

- LCD touch screen
- Capacitance touch door bell
- 9mm thickness





Packaging & Shipping

DND function touch switch glass panel door bell hotel

1. Quality Export Packing
2. Gross Weight: 0.75kgs/pc; 30kgs/carton
3. Packing: 1pc/inner box; 40pcs/carton; 0.06cbm/carton



Company Information

March 2016 Honglg Electronic Factory is updated to Dongguan Yinlang Electronic Technology Col.Ltd. Welcome new and old customers to visit our company.

About HONGLG:

Established in 2002 initially name was Dongguan Shijie HongLG Electronic Factory;

In 2004 manufactured the first aluminum alloy material electronic hotel lock in China;

In 2005 manufactured the first split model electronic hotel lock HD8018, HD8019 in China;

In 2006 supplied over 2000 locks for Doha Asia Games Athlete apartment;

In 2007 developed the first biometric fingerprint lock;

In 2009 supplied for 2nd Summer Youth Olympic Games Athlete apartment;

In 2011 supplied for 10th national games Athlete apartment;

In 2012 the first face recognition lock in China;

In 2013 supplied for 12th National Games Athlete apartment;

In 2016 updated to Dongguan Yinlang Electronic Technology Co. Ltd

We keep moving....



Our Services

1. We provide 2% spare part for free;
2. We provide OEM and ODM service;
3. We provide our lock ,your safety and satisfaction.
4. All items come with 3 years warranty;
5. We have sent our locks to BE/ES warehouse, which will save a lot of transport cost for our business.
6. During warranty period, our factory will offer free service for replacement;
7. Beyond warranty, we can also offer spare parts and maintenance with paid service;
8. Technical support will be offered through all the after-sales service.



OEM services

1. logo on Devnce
2. Welcome Screen
3. Pre-installed APP
4. Android Settings
5. Packing Box



ODM services

1. PCAB Design & Developmet
2. Tooling Design & Development
3. Software Customization.

Certifications



ELA 茵朗 Dongguan Yinlang Electronic Technolog Co.,Ltd

☎ 13926821097

✉ Linda@honglg.com

🌐 smartdoor-lock.com

10-3 The First Industrial Park, Chong Huan West Road, Shijie town, Dongguan City, Guangdong, China