

Fingerprint Smart Door Lock Face Recognition Remotely Captures Cat'S Eye Lock

Our Product Introduction

Basic Information

- Place of Origin: Guangdong China
- Brand Name: ELA
- Model Number: E14
- Price: Negotiable



Product Specification

- Operation Temperature: -20°C~60°C
- Material: Aluminum Alloy
- Door Thickness: 40-120mm
- Power Supply: 4200 Milliampere Lithium Battery
- Unlock Method: 3D Face+semiconductor Fingerprint + MFCARD + Password + Key + TUYA
- Mortise: 388*40mm、388*30mm、240*30mm、240*24mm、280*24mm
- Emergency Supply: USB Emergency Service
- Color: Black / Coffee Gold
- Highlight: **Fingerprint Smart Door Lock, Smart Door Lock Face Recognition**



Product Description

Product Details



Face Recognition Door Lock camera remotely captures the cat's eye lock

Product Description

Number of fingerprints	≤ 100
Number of cards	≤ 100
Number of password	≤ 100
Camera	1 million pixels
Lock core level	C- level lock cylinder
Carton Size	560*465*435mm
Color box Size	548*230*150mm
N.W	6.97KG/SET
G.W	33.32KG/CTN
Package	6sets/CTN
Door Type	Glass door, Wood door, Steel door, Stainless Steel door, Aluminum door
Application	Apartment
Suitable for	Widely Usage
Function	Multi-function

The integration of face recognition, a door lock with a camera that remotely captures the cat's eye, and smart home technology is revolutionizing the way we secure our homes. With this technology, you can now use your phone to unlock the door, grant access to authorized individuals, and monitor who enters and exits your home.



Dual camera 3D face recognition

QUICK UNLOCK IN 0.5s

OPEN DOORS
MORE EASILY



MULTIPLE UNLOCKING METHODS



-  Remote Visual Cat's Eye
-  Fingerprint Unlock
-  Password Unlock
-  RFID Card Unlock
-  3D Face Unlock
-  Key unlock
-  APP

Support:
English/Chinese

Support:
Combination unlocking

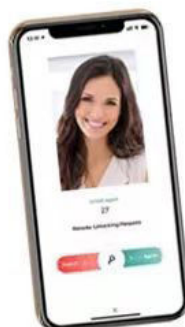
Support:
Capture the intruder



Powerde By

tuya[®]

Intelligence
Inside



back panel front panel



IC card



Mechanical key



Cylinder



screw packs



Mortise



Tuya Smart



Smart Life



Someone rang the doorbell
08:41

Pls choose the right mortise for your door

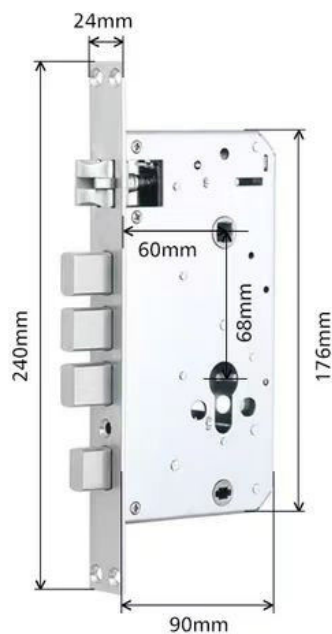
24 x 240 (60 68) - Gun Black



Face Recognition
TUYA Version



Universal Right / Left direction
(can be adjust free)



Packing & Delivery

To better ensure the safety of your goods, professional, environmentally friendly, convenient and efficient packaging services will be provided.



Our services



OEM services

1. logo on Devnce
2. Welcome Screen
3. Pre-installed APP
4. Android Settings
5. Packing Box

ODM services

1. PCAB Design & Developmet
2. Tooling Design & Development
3. Software Customization.

Company Profile

COMPANIES PROFILE



ABOUT US

Established in 2002 ELA has over 40 models of smart lock, Our products include smart hotel lock(card hotel lock,bluetooth hotel lock,online system hotel lock,etc) and intelligent residential locks. (Face recognition system, fingerprint lock,password lock). we have our own R&D department which contains 5 electronic engineers and 4 mechanical engineers . We provide **OEM/ODM customization** services. Our products are CE,ISO9001 ,EN14846 and Fidelio Interface approved.



OUR TEAM

1. Quality is life, we establish our brand step by step (high quality)
2. Competitive price.
3. Attractive package.
4. Fast Delivery.
5. Excellent after-sale service
6. Feel free to join our team and establish business relationship between us.
7. Welcome to inquiry us and send you our catalogue to know what we have



OUR SHOWROOM



Our factory

MANUFACTURING WORKSHOP



PACKAGING AND TRANSPORTATION



- Fast
- Safety
- Convenience



Air Freight Transport



Truck Transportation



Ocean Freight



Our Advantages

WHY CHOOSE US

ADVANTAGE



HIGH QUALITY

High quality is
our obligation

[LEARN MORE](#)



BEST PRICE

Best price is
our aims

[LEARN MORE](#)



SUPERIOR SERVICE

Superior service is
our mission

[LEARN MORE](#)

CERTIFICATE



EXHIBITION



FAQ

FAQ

01 WHO ARE WE?

We are based in Guangdong, China, start from 2016, sell to Domestic Market(20.00%), Mid East (12.00%), Southeast Asia(10.00%), Oceania(10.00%), Central America(10.00%), South Asia(10.00%), Eastern Europe(5.00%), Africa(5.00%), Eastern Asia(5.00%), Western Europe(5.00%), North America (2.00%), South America(2.00%), Northern Europe(2.00%), Southern Europe(2.00%). There are total about 11-50 people in our office.

02 HOW CAN WE GUARANTEE QUALITY?

Always a pre-production sample before mass production;
Always final inspection before shipment;

03 WHAT CAN YOU BUY FROM US?

Smart Home System, DND Series Products of Hotel, Hotel Telephone, Hardware, Electronic Hotel Lock

04 WHY SHOULD YOU BUY FROM US NOT FROM OTHER SUPPLIERS?

Established in 2002 ELA has over 40 models of smart lock, Our products include smart hotel lock (card hotel lock, bluetooth hotel lock, online system hotel lock, etc) smart home system and Face recognition system, fingerprint lock, password lock)

05 WHAT SERVICES CAN WE PROVIDE?

Accepted Delivery Terms: FOB, CFR, CIF, EXW, FAS, CIP, FCA, CPT, DEQ, DDP, DDU, Express Delivery, DAF, DES;
Accepted Payment Currency: USD, EUR, JPY, CAD, AUD, HKD, GBP, CNY, CHF;
Accepted Payment Type: T/T, L/C, D/P, D/A, MoneyGram, Credit Card, PayPal, Western Union, Cash, Escrow;
Language Spoken: English, Chinese, Spanish, Japanese, Portuguese, German, Arabic, French, Russian, Korean, Hindi, Italian

BACK TO HOME

 **ELA 茵朗** Dongguan Yinlang Electronic Technolog Co.,Ltd



13926821097



Linda@honglg.com



smartdoor-lock.com

10-3 The First Industrial Park, Chong Huan West Road, Shijie town, Dongguan City, Guangdong, China